



# DISHWASHER S-100

2.5 kW wash tank and 7.5 kW boiler



WARE WASHING  
PASS-THROUGH DISHWASHERS



- ✓ Its double skinned hood ensures thermal and acoustic insulation and energy saving.
- ✓ Lifting bar activated hood opening.
- ✓ Magnetic hood micro-switch.
- ✓ Hood activated, auto cycle start.
- ✓ Rounded finish interior ensures no accumulation of dirt.
- ✓ Electronic, watertight, high-performance control panel.
- ✓ Wash and rinse temperature display.
- ✓ Precision positioned water jets guarantee optimum washing result for even the most stubbornly stained glasses.
- ✓ Easy to assemble, boltless rinse spray arms.
- ✓ Completely rounded, stainless steel wire rack support and guide.
- ✓ Double filter system provides effective wash pump protection.
- ✓ Easily removable dispersers and filters for cleaning and maintenance. No tools needed.
- ✓ Equipped with adjustable thermostats in tank and boiler and safety thermostat in boiler.
- ✓ Height-adjustable feet.
- ✓ Designed for quick and easy maintenance. Fast access to components for on-site maintenance.
- ✓ 100% tested.

## SALES DESCRIPTION

Commercial pass-through dishwasher with a max. loading height of up to 400 mm and 3 wash cycles with thermal cycle delay option included. A stainless steel, top of tank filter system is also included as standard.

- ✓ **GUARANTEED DISINFECTION** in compliance with DIN 10534 Norm.
- ✓ **THERMAL LOCK** function: Sanitization guarantee. Ensures that the rinsing will be carried out only when the ideal temperature for disinfecting the dishes has been reached.
- ✓ **TEMPERATURE DISPLAY** to visually check this critical operating parameter. Useful for HACCP management systems.
- ✓ Sturdy and reliable.
- ✓ Maximum productivity thanks to shorter cycles.
- ✓ Stainless Steel, sturdy and resistant washing arms that do not get damaged.
- ✓ Tank capacity above average: it takes more time to saturate the water of debris.
- ✓ 1.2 Hp wash pump: optimal washing results.
- ✓ 7.5 kW boiler: short recovery time.
- ✓ Full optional list.
- ✓ Suitable for straight in line and corner situations.
- ✓ Intuitive use.
- ✓ Top and bottom wash arms.
- ✓ Catering grade stainless steel construction (AISI 304 2B).

## INCLUDES

- ✓ Rinse aid pump.
- ✓ 1 open basket.
- ✓ 1 plate basket.
- ✓ 1 cutlery basket.
- ✓ Stainless steel top-of-tank filter set.

## ACCESSORIES

- ☐ Dosing equipments
- ☐ Tables for dishwashers P/X/S (pass-through model)
- ☐ Manual water softeners
- ☐ Automatic water softeners
- ☐ 500 x 500 mm. baskets
- ☐ Inserts, supplements &
- similar
- ☐ High Feet Kit
- ☐ Booster pump kit
- ☐ Reverse Osmosis device OS-140P



**sammic** | [www.sammic.com](http://www.sammic.com)  
Food Service Equipment Manufacturer

Polígono Basarte, 1.  
20720 Azkoitia, Spain

phone +34 943 15 72 36  
[sales@sammic.com](mailto:sales@sammic.com)



Project

Date

Item

Qty

Approved

product sheet  
updated 28/07/2020



# DISHWASHER S-100

2.5 kW wash tank and 7.5 kW boiler



## SPECIFICATIONS

Basket dimensions: 500 mm x 500 mm  
Maximum glass height: 400 mm

Cycles: 3

Cycle duration: 60 " / 120 " / 180 "

Production baskets/hour: 60 / 30 / 20

✓ Boiler capacity: 10 l

✓ Wash tank capacity: 40 l

✓ Water consumption/cycle: 3.5 l

### Loading

✓ Pump: 880 W / 1.2 Hp

✓ Tank: 2500 W

✓ Boiler: 7500 W

✓ Total loading: 8380 W

### External dimensions (WxDxH)

✓ Width: 640 mm (: 732 mm)

✓ Depth: 756 mm (: 860 mm)

✓ Height: 1920 mm / 1468 mm

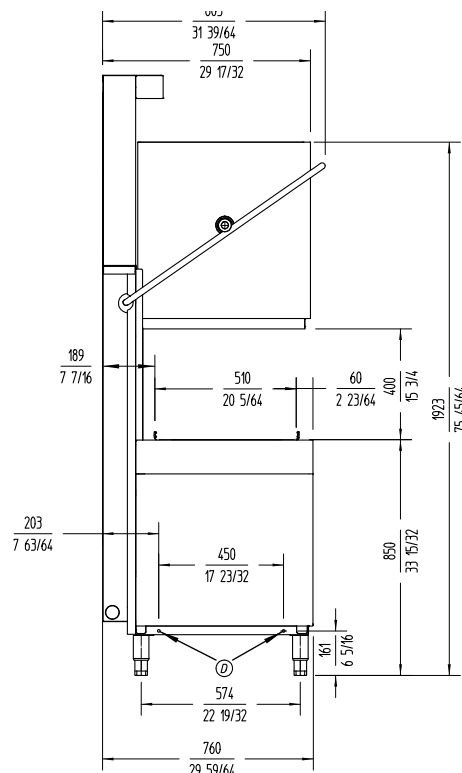
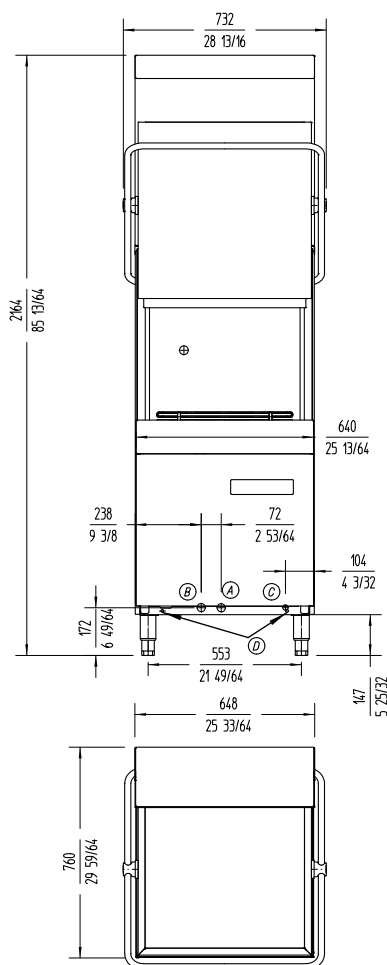
Net weight: 115 Kg

Wash temperature: 65 °C

Rinse temperature: 90 °C

Net weight: 115 Kg

Noise level (1m.): <70 dB(A)



## AVAILABLE MODELS

1302300	Dishwasher S-100 400/50/3N
1302301	Dishwasher S-100 400/50/3N DD
1302302	Dishwasher S-100 230/50/1 DD
1302303	Dishwasher S-100 220/60/3
1302304	Dishwasher S-100B 400/50/3N (with drain pump)
1302305	Dishwasher S-100B 400/50/3N DD (with drain pump)
1302306	Dishwasher S-100B 230/50/1 DD (with drain pump)
1302307	Dishwasher S-100B 220/60/3 (with drain pump)
1302308	Dishwasher S-100C 400/50/3N (with break tank and drain pump)
1302309	Dishwasher S-100C 400/50/3N DD (with break tank and drain pump)
1302310	Dishwasher S-100C 230/50/1 DD (with break tank and drain pump)
1302311	Dishwasher S-100C 220/60/3 (with break tank and drain pump)

\* Ask for special versions availability

**sammic** | [www.sammic.com](http://www.sammic.com)  
Food Service Equipment Manufacturer

Polígono Basarte, 1.  
20720 Azkoitia, Spain

phone +34 943 15 72 36  
[sales@sammic.com](mailto:sales@sammic.com)



Project

Date

Item

Qty

Approved

WARE WASHING  
PASS-THROUGH DISHWASHERS

product sheet  
updated 28/07/2020