



## GLASSWASHER P-35

To wash 30 baskets/hour. 350x350mm racks. Max. loading height: 220mm.



WARE WASHING  
COMMERCIAL GLASSWASHERS



### FEATURES AND BENEFITS

- ✓ Catering grade stainless steel construction.
- ✓ Double skinned door equipped with magnetic micro-switch and high-efficiency seal, ensuring thermal and acoustic insulation.
- ✓ User-friendly electro-mechanical control panel.
- ✓ 1 wash cycle.
- ✓ Highly efficient stainless steel dispersers ensure optimum water distribution for enhanced washing results.
- ✓ Double filter system provides effective wash pump protection.
- ✓ Independent rinse boiler.
- ✓ Easily removable dispersers and filters for cleaning and maintenance. No tools needed.
- ✓ Designed for quick and easy maintenance.
- ✓ 100% tested.

### SALES DESCRIPTION

Capacity by basket: 16 glasses of Ø8cm. each. Hourly output: 30 baskets or 480 glasses.

- ✓ GUARANTEED DISINFECTION in compliance with DIN 10534 Norm.
- ✓ User-friendly.
- ✓ Optimal washing results.
- ✓ Sturdy and reliable.
- ✓ Stainless Steel, sturdy and resistant washing arms that do not get damaged.
- ✓ 1.5 kW tank element: optimal recovery time.

### INCLUDES

- ✓ Rinse aid pump.
- ✓ 1 mixed basket.
- ✓ 1 open basket.
- ✓ 1 small cutlery basket.

### ACCESSORIES

- ☐ Stands for glass- and dishwashers
- ☐ Dosing equipments
- ☐ Manual water softeners
- ☐ Automatic water softeners
- ☐ 350X350 mm. baskets
- ☐ Inserts, supplements & similar
- ☐ High Feet Kit
- ☐ Reverse Osmosis device OS-140P



**sammic** | [www.sammic.com](http://www.sammic.com)  
Food Service Equipment Manufacturer

Polígono Basarte, 1.  
20720 Azkoitia, Spain

phone +34 943 15 72 36  
[sales@sammic.com](mailto:sales@sammic.com)



Project

Date

Item

Qty

Approved

product sheet  
updated 29/06/2020



## GLASSWASHER P-35

To wash 30 baskets/hour. 350x350mm racks. Max. loading height: 220mm.



### SPECIFICATIONS

Basket dimensions: 350 mm x 350 mm

Maximum glass height: 220 mm

Cycle duration: 120 "

Production baskets/hour: 30

Boiler capacity: 3.2 l

Wash tank capacity: 12.7 l

Water consumption/cycle: 2.3 l

#### Loading

✓ Pump: 75 W / 0.1 Hp

✓ Tank: 2075 W

✓ Boiler: 2000 W

✓ Total loading: 2075 W

#### External dimensions (WxDxH)

✓ Width: 420 mm

✓ Depth: 495 mm

✓ Height: 645 mm

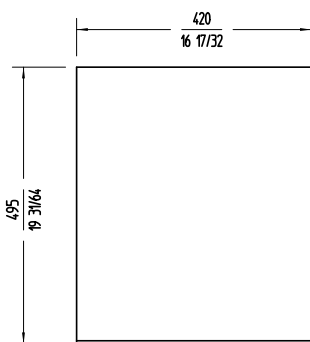
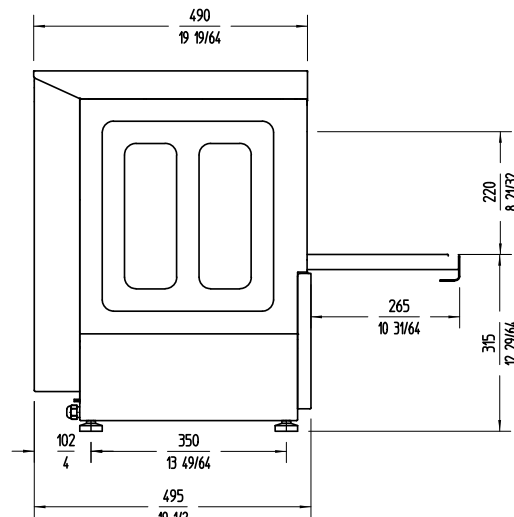
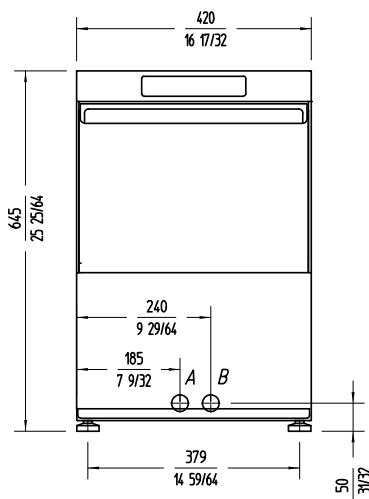
**Net weight:** 29.5 Kg

**Noise level (1m.):** <70 dB(A)

#### Crated dimensions

485 x 590 x 690 mm

Gross weight: 32 Kg.



### AVAILABLE MODELS

1301950 Glasswasher P-35 230/50/1

1301951 Glasswasher P-35 220/60/1

1301952 Glasswasher P-35 230/50/1 (R)

1301953 Glasswasher P-35 230/50/1 DD

\* Ask for special versions availability

**sammic** | [www.sammic.com](http://www.sammic.com)  
Food Service Equipment Manufacturer

Polígono Basarte, 1.  
20720 Azkoitia, Spain

phone +34 943 15 72 36  
[sales@sammic.com](mailto:sales@sammic.com)



Project

Date

Item

Qty

Approved

WARE WASHING  
COMMERCIAL GLASSWASHERS

product sheet  
updated 29/06/2020