



DISHWASHER P-100

2.5 kW wash tank and 6 kW boiler



WARE WASHING
PASS-THROUGH DISHWASHERS



FEATURES AND BENEFITS

- ✓ Suitable for straight in line and corner situations.
- ✓ Intuitive use.
- ✓ Top and bottom wash arms.
- ✓ Catering grade stainless steel construction (AISI 304 2B).
- ✓ Lifting bar activated hood opening.
- ✓ Magnetic hood micro-switch.
- ✓ Hood activated, auto cycle start.
- ✓ Rounded finish interior ensures no accumulation of dirt.
- ✓ Electronic, watertight, high-performance control panel.
- ✓ Precision positioned water jets guarantee optimum washing result for even the most stubbornly stained glasses.
- ✓ Easy to assemble, boltless rinse spray arms.
- ✓ Double filter system provides effective wash pump protection.
- ✓ Easily removable dispersers and filters for cleaning and maintenance. No tools needed.
- ✓ Equipped with adjustable thermostats in tank and boiler and safety thermostat in boiler.
- ✓ Height-adjustable feet.
- ✓ Designed for quick and easy maintenance. Fast access to components for on-site maintenance.
- ✓ 100% tested.

SALES DESCRIPTION

Commercial pass-through dishwasher with a max. loading height of up to 400 mm and 3 wash cycles with thermal cycle delay option included.

- ✓ **GUARANTEED DISINFECTION** in compliance with DIN 10534 Norm.
- ✓ **THERMAL LOCK** function: Sanitization guarantee. Ensures that the rinsing will be carried out only when the ideal temperature for disinfecting the dishes has been reached.
- ✓ User-friendly.
- ✓ Optimal washing results.

INCLUDES

- ✓ Rinse aid pump.
- ✓ 1 open basket.
- ✓ 1 plate basket.
- ✓ 1 cutlery basket.

ACCESSORIES

- ☐ Filters for dishwashers
- ☐ Dosing equipments
- ☐ Tables for dishwashers P/X/S (pass-through model)
- ☐ Manual water softeners
- ☐ Automatic water softeners
- ☐ 500 x 500 mm. baskets
- ☐ Inserts, supplements & similar
- ☐ High Feet Kit
- ☐ Reverse Osmosis device OS-140P



sammic | www.sammic.com
Food Service Equipment Manufacturer

Polígono Basarte, 1.
20720 Azkoitia, Spain

phone +34 943 15 72 36
sales@sammic.com



Project

Date

Item

Qty

Approved

product sheet
updated 11/05/2020



DISHWASHER P-100

2.5 kW wash tank and 6 kW boiler



SPECIFICATIONS

Basket dimensions: 500 mm x 500 mm

Maximum glass height: 400 mm

Cycles: 3

Cycle duration: 120 " / 180 " / 210 "

Production baskets/hour: 30 / 20 / 17

✓ Boiler capacity: 10 l

✓ Wash tank capacity: 40 l

✓ Water consumption/cycle: 3.5 l

✓

Loading

✓ Pump: 750 W / 1 Hp

✓ Tank: 2500 W

✓ Boiler: 6000 W

✓ Total loading: 6750 W

✓

External dimensions (WxDxH)

✓ Width: 640 mm (: 732 mm)

✓ Depth: 756 mm (: 860 mm)

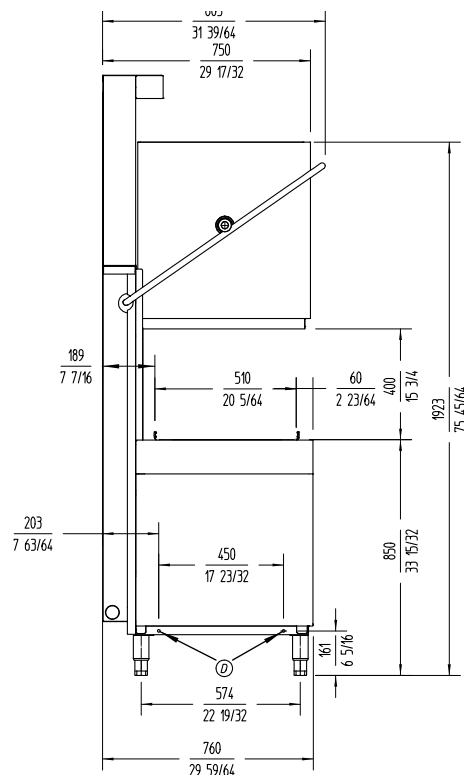
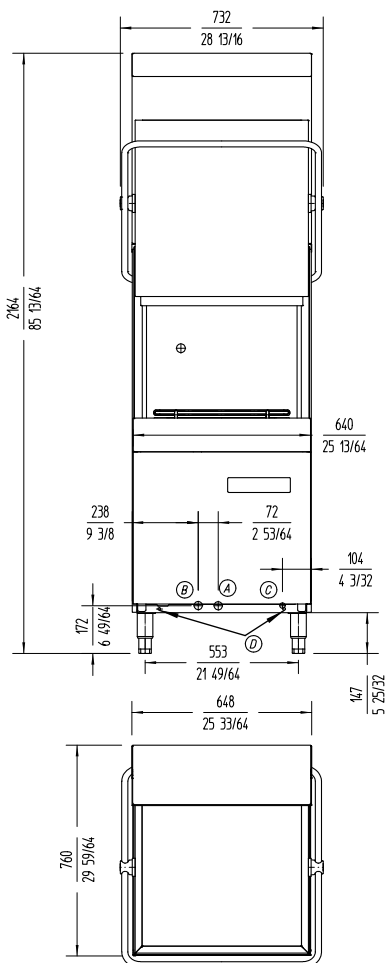
✓ Height: 1920 mm / 1468 mm

Net weight: 115 Kg

Wash temperature: -- °C

Rinse temperature: -- °C

Noise level (1m.): <70 dB(A)



Crated dimensions

760 x 860 x 1470 mm

AVAILABLE MODELS

1302200	Dishwasher P-100 400/50/3N
1302203	Dishwasher P-100 220/60/3
1302208	Dishwasher P-100 220/60/1
1302201	Dishwasher P-100 400/50/3N DD
1302202	Dishwasher P-100 230/50/1 DD
1302204	Dishwasher P-100B 400/50/3N (with drain pump)
1302207	Dishwasher P-100B 220/60/3 (with drain pump)
1302205	Dishwasher P-100B 400/50/3N DD (with drain pump)
1302206	Dishwasher P-100B 230/50/1 DD (with drain pump)
1302209	Dishwasher P-100B 220/60/1 (with drain pump)

* Ask for special versions availability

sammic | www.sammic.com
Food Service Equipment Manufacturer

Polígono Basarte, 1.
20720 Azkoitia, Spain

phone +34 943 15 72 36
sales@sammic.com



Project

Date

Item

Qty

Approved

WARE WASHING
PASS-THROUGH DISHWASHERS

product sheet
updated 11/05/2020