



## UTENSIL WASHER LU-60

600 x 630 mm. basket



WARE WASHING  
POT WASHERS



### SALES DESCRIPTION

Max. loading height: 650mm.

### FEATURES AND BENEFITS

**Ideal to wash big sized pots and wares.**

- ✓ Powerful and high pressure: specially indicated for restaurants, ice-cream shops, pastries and butchereries.
- ✓ Constructed from stainless steel.
- ✓ Door divided in two parts, perfectly counterbalanced, easy to handle.
- ✓ Double skinned machines: silent working and reduced thermal dispersions.
- ✓ Wash tank without corners to avoid dirt accumulation in angles.
- ✓ Stamped wash dispersers in stainless steel tubes.
- ✓ Easy to remove wash- and rinse dispersers.
- ✓ Safety micro switch at the door and electronic safety device to guarantee washing temperature and time.
- ✓ Electronic control panel with LED showing wash and rinse temperature.

### INCLUDES

- ✓ 1 stainless steel basket and insert for 4 trays.

### ACCESSORIES

- ☐ Stainless steel baskets
- ☐ Manual water softeners
- ☐ Automatic water softeners
- ☐ Dosing equipments
- ☐ Carrier for trays



**sammic** | [www.sammic.com](http://www.sammic.com)  
Food Service Equipment Manufacturer

Polígono Basarte, 1.  
20720 Azkoitia, Spain

phone +34 943 15 72 36  
[sales@sammic.com](mailto:sales@sammic.com)



Project

Date

Item

Qty

Approved

product sheet  
updated 27/03/2020



# UTENSIL WASHER LU-60

600 x 630 mm. basket



WARE WASHING  
POT WASHERS

## SPECIFICATIONS

Basket dimensions: 600 mm x 630 mm

Stainless steel basket : 1

Equipment: supplementary trays: 1

Maximum glass height: 650 mm

Cycles: 3

Cycle duration: 120 " / 240 " / 360 "

Production baskets/hour: 30 / 15 / 10

Pressure pump power: 470 W

### Loading

✓ Pump: 3 Hp / 2200 W

✓ Tank: 6000 W

✓ Boiler: 9000 W

✓ Total loading: 11200 W

Feed water temperature: 10 °C - 60 °C

Wash temperature: 40 °C - 70 °C

Rinse temperature: 70 °C - 95 °C

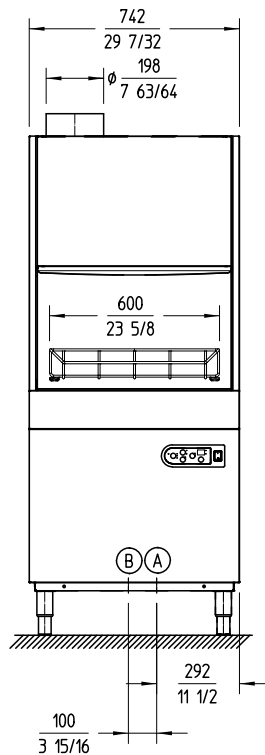
Wash tank capacity: 60 l

Boiler capacity: 12 l

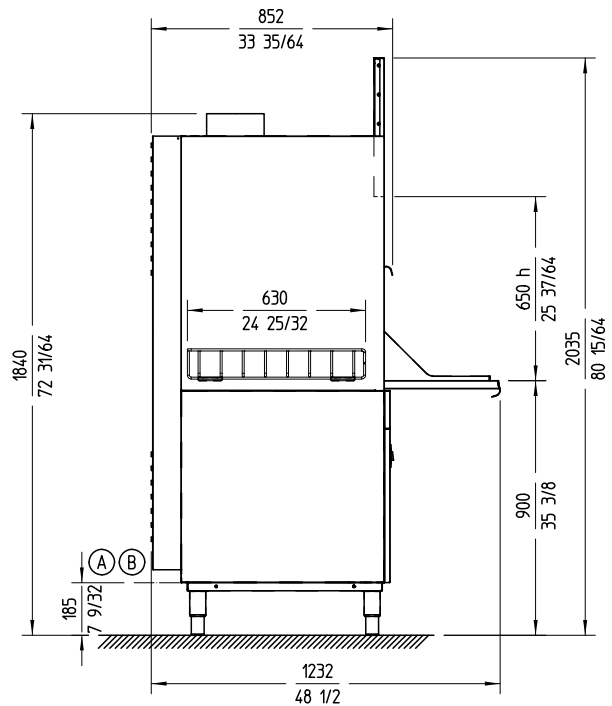
Water consumption/cycle: 5 l

Drainage base maximum height: 185 mm

Drain diameter: 30 mm



A- Entrada de agua 3/4" GAS  
B- Tubo de desagüe Ø30 mm



### External dimensions (WxDxH)

✓ Width: 742 mm

✓ Depth (closed): 852 mm

✓ Depth (open): 1232 mm

✓ Height (closed): 1840 mm

✓ Height (open): 2035 mm

Net weight: 168 Kg

Noise level (1m.): 76 dB(A)

### Crated dimensions

790 x 980 x 1950 mm

## AVAILABLE MODELS

1300570 Utensil washer LU-60 230-400/50/3N

1300574 Utensil washer LU-60B 230-400/50/3N (with drain pump)

1300571 Utensil washer LU-60 400/50/3 without N

1300572 Utensil washer LU-60 220/60/3

1300573 Utensil washer LU-60 440/60/3 SIN N

1300575 Utensil washer LU-60B 400/50/3 without N

1300576 Utensil washer LU-60B 220/60/3

1300577 Utensil washer LU-60B 440/60/3 without N

1300578 Utensil washer LU-60 400/50/3N SB

1300568 Utensil washer LU-60 400/60/3N

\* Ask for special versions availability

**sammic** | [www.sammic.com](http://www.sammic.com)  
Food Service Equipment Manufacturer

Polígono Basarte, 1.  
20720 Azkoitia, Spain

phone +34 943 15 72 36  
[sales@sammic.com](mailto:sales@sammic.com)



Project

Date

Item

Qty

Approved

product sheet  
updated 27/03/2020